

General Information

FITZPATRICK SKIN TYPE

I		very bright, pale white
II		light, blonde
III		light brown, light to olive
IV		olive, medium brown
V		brown, dark brown
VI		black, very dark brown

GENERAL INFORMATION

COLOR SCALE

To make selection easier, you will find the color proportions for each pigment shade in graphic form.



COLOR SAMPLES

The color samples reflect the pure brilliance and consistency of Swiss Color® pigments. The actual effect of the color is determined by the respective skin type.

SWISS COLOR® QUALITY

Swiss Color® pigments comply with the following regulations:

- of the FDHA on articles for mucosal, skin and hair contact (Ordinance on Articles for Human Contact, HKV, SR 817.023.41) Version 1 May 2017 and the ResAP(2008)1. of the Commission amending Annex XVII of Regulation (EC) No 1907/2006 of the European Parliament and of the Council on the Registration, Evaluation, Authorization and Restriction of Chemicals (REACH) concerning substances in tattooing inks or Permanent make up.

Swiss Color® pigments are manufactured according to GMP (Good Manufacturing Practices) guidelines. We guarantee that Swiss Color® pigments are manufactured from high-purity raw materials, mixed and dispersed under vacuum and sterilized with gamma rays. We refrain from adding preservatives in order to exclude allergenic substances. Swiss Color® pigments contain no iron oxides, no AZO dyes, no PAH = polycyclic aromatic hydrocarbons, no banned heavy metals and no dangerous aromatic amines (NDELA = nitrosodiethanolamines). Each pigment is tested for possible impurities in independent, accredited testing laboratories.

SC Cosmetics Handels GmbH
Baumgarten 206
A-6320 Angerberg
T +43 5332 56671
info@swiss-color.com
WWW.SWISS-COLOR.COM

SC-International® AG
Neugasse 26
CH-9000 St. Gallen
T +41 71 663 77 77
info@swiss-color.ch
WWW.SWISS-COLOR.CH

Areola

The extensive spectrum of Areola pigments enables finest matching to the skin. Areola and Base pigments, mixed in the right ratio, expand the shade possibilities many times over.

COLOR SCALE COLOR DESCRIPTION

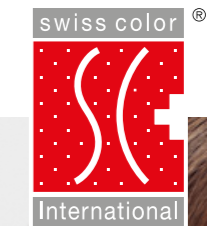
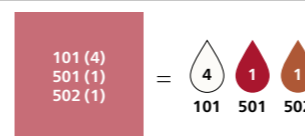
501	501 AREOLA 1		Strong, cool red to mix in for desired pink tones for the nipple.
502	502 AREOLA 2		Warm brick red color with yellow undertones for the nipple.
503	503 AREOLA 3		Yellow based brown with a reddish brown undertone for a light areola.
504	504 AREOLA 4		Warm, honey brown with yellowish undertones for a medium colored areola.
505	505 AREOLA 5		Brown, cooler shade with yellow brown undertone for a dark colored areola.

Mixing tips

All Swiss Color® pigments can be mixed with each other without hesitation. Depending on the skin type of the customer, precise mixing ratios will provide perfect pigment tones for excellent results.

LIP		101 (3) 402 (1)	101 (3) 406 (2)	101 (2) 403 (1)	101 (2) 403 (1) 408 (1)	101 (3) 408 (1)	401 (2) 101 (1) 201 (1)
		406 (3) 101 (1)	403 (1) 407 (1)	406 (2) 102 (1)	104 (1) 105 (1)	103 (1) 105 (1)	406 (2) 105 (1)
BROW		201 (2) 203 (1)	201 (3) 203 (1)	201 (1) 205 (1)	201 (1) 206 (1)	203 (2) 205 (1)	207 (2) 103 (1)
SKIN		101 (12) 503 (1)	101 (5) 201 (1) 502 (1)	101 (3) 402 (1) 504 (1)	101 (4) 502 (1)	101 (3) 503 (2) 504 (1)	402 (2) 202 (1)
AREOLA		101 (4) 501 (1) 502 (1)	105 (3) 502 (2)	105 (1) 505 (1) 502 (1)	101 (1) 503 (1)	101 (1) 503 (1)	503 (2) 505 (1)

MIXING EXAMPLE



Swiss Color Pigments

COLOR CARD